



Introducing our new Maxgrip Mat. This high quality rubber mat has been designed specifically for confinement barns where extra traction is the number one objective. Producers have requested mats with additional traction to overcome slippage in challenging applications. The new Maxgrip Mat has been designed to accomplish these goals and yet maintain the level of comfort that Animat provides for maximum performance of your cattle on difficult floors.

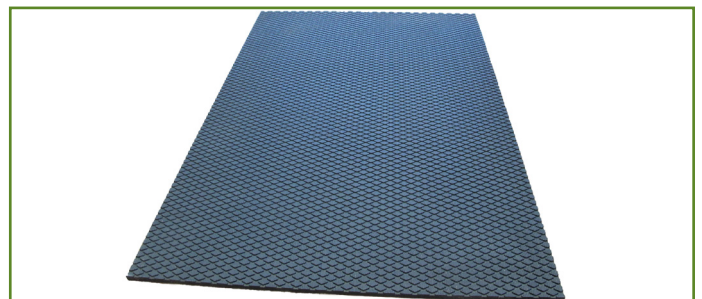
## General specifications

- Use:** Extra traction in confinement barns.
- Compatibility:** Adapts to all existing or pending construction of concret slatted floors.
- Composition:** 100% recycled rubber.
- Surface:** Slip-resistant surface that evacuates liquid waste for increased traction under specific conditions.
- Underside:** Smooth underside.



## Size

- Thickness:** 0,810" (+/- 0,030")  
20.57 mm (+/- 0,76 mm)
- Size and layout:** All floor systems can be custom-made to match your plans or existing facilities.
- Anchors:** Many sizes available, refer to the accessories technical sheet.



## Other information

- Weight:** 4,58 lb/ft<sup>2</sup> (+/- 0,1 lb)  
2,07 kg/ft<sup>2</sup> (+/- 0,045 kg)
- Installation:** Simple and quick.
- Interlock:** Available.

**animat.ca**  
Distributed by:

