

Beef Facility Flooring

Experience Comfort



A photograph of a large group of black cows in a barn. The cows are standing on a dark, textured floor made of rubber slats with rectangular openings. The barn has a high ceiling with wooden beams and metal supports. The lighting is bright, coming from the left side. A green banner with white text is overlaid on the bottom half of the image.

Maxgrip Slatted Rubber Flooring

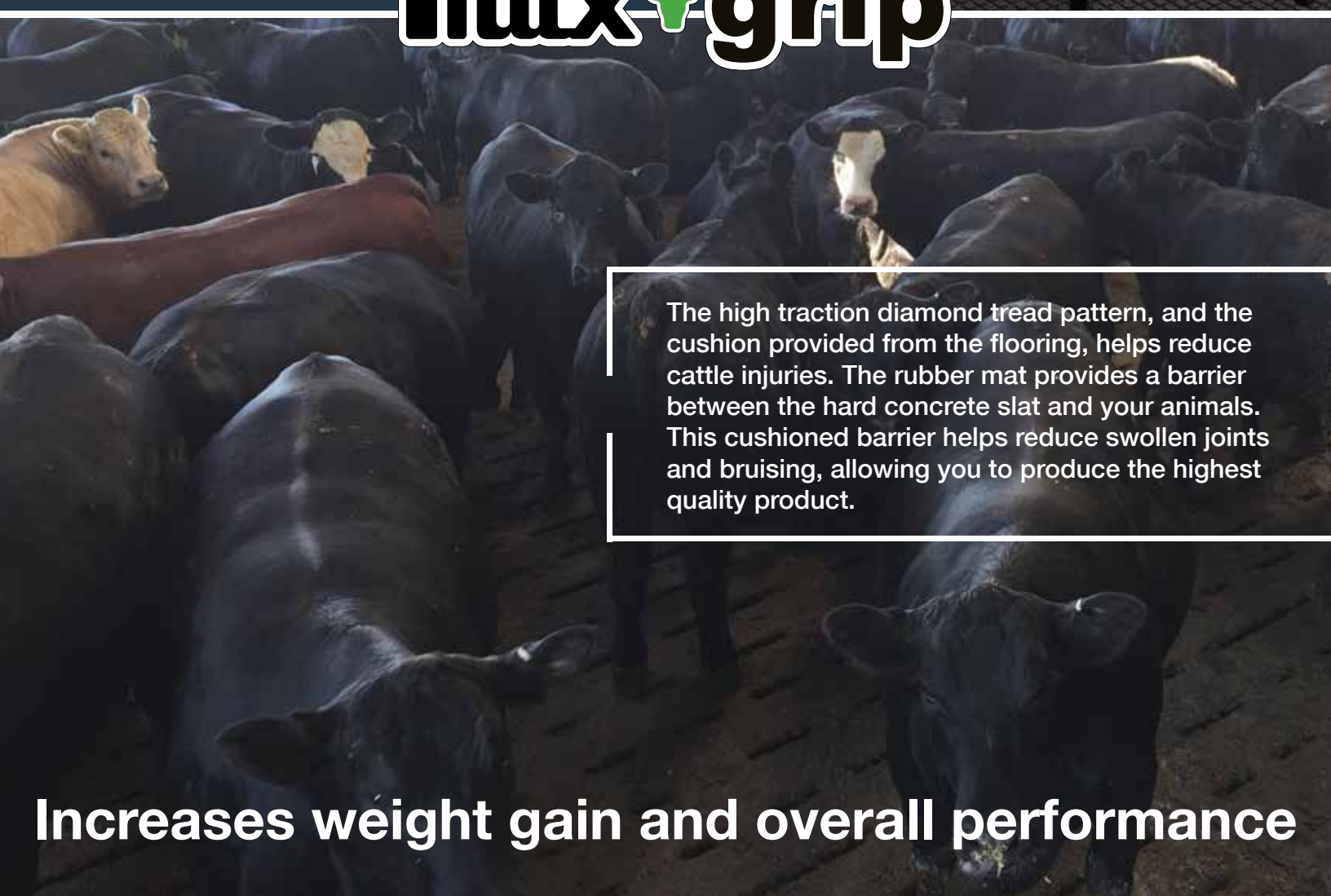
Performance

The Maxgrip mats have been designed specifically for slatted floor confinement facilities to improve traction, increase overall cattle performance, and provide better health for cattle on concrete slats.

How did we obtain this level of performance? We've been manufacturing and installing our mats for over 36 years. Producer satisfaction is what drives us to make a high-quality product, with a competitive warranty to back it. We stand behind our product.



maxgrip



The high traction diamond tread pattern, and the cushion provided from the flooring, helps reduce cattle injuries. The rubber mat provides a barrier between the hard concrete slat and your animals. This cushioned barrier helps reduce swollen joints and bruising, allowing you to produce the highest quality product.

Increases weight gain and overall performance

Fastest & Easiest Installation

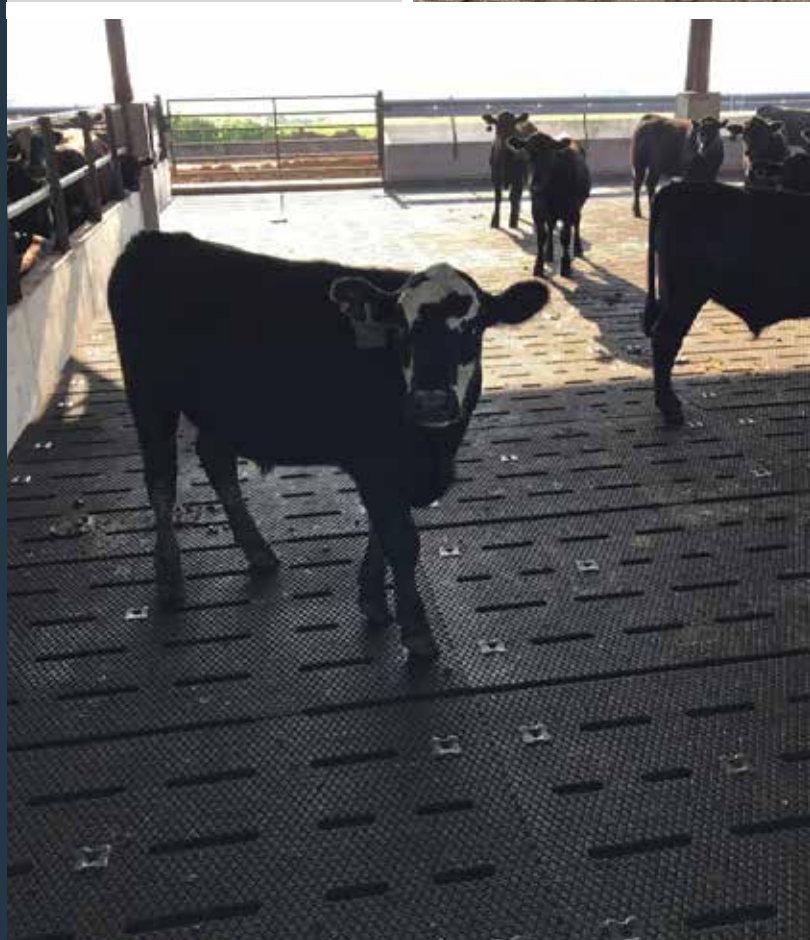
At Animat we know not all slats are the same, and that every slatted floor project is different. We work with you, or your builder, to “custom cut” the mats to fit your specific floor plan. Providing this service to our customers allows for a quicker and easier installation. It reduces cutting time and labor, saving you money.

Original Locking System

Developed by Animat

Animats locking system is second to none. Our locks are easy to install and keep our mats in place.

Easy installation
with a simple drill!



Slatted Rubber Flooring

The unique Maxgrip design gives cattle confidence when getting up or lying down, and allows them to move throughout the pen easily with sure footing. Cattle will tend to visit the feed bunk more often, thus improving feed intake and efficiency.

maxgrip

Thickness:	13/16" (+/- 1/32") 20.50 mm (+/- 0.75 mm)
Size and layout:	All floor systems can be custom-made to match your plans or existing facilities.
Anchors:	Slat Lock system developed by Animat.
Weight:	4.60 lb/ft ² (+/- 0.1 lb) 2.75 kg/ft ² (+/- 0.045 kg)

Benefits

- Reduces injuries
- Improves mobility
- Increases cattle comfort and confidence
- Promotes healthier cattle
- Improves feed conversion
- Increases weight gain
- Reduces lameness

Features

- Quickest installation in the industry
- Diamond tread pattern provides superior traction
- Offers optimal grip
- Custom cut to fit your facility, reduces installation time and waste
- Can be installed on new slats or existing old slats
- Our Slat Lock system keeps mats in place
- 36 years of experience in manufacturing quality rubber flooring

Slatted Rubber Flooring

A large indoor workshop or garage with a corrugated metal ceiling and wooden support beams. In the background, there are several yellow pieces of machinery, possibly forklifts or lift trucks, parked. The floor is covered with black interlocking mats. A red bucket is visible on the right side of the foreground. A blue cable lies across the mats in the foreground. The text "Working Area" is overlaid on a green banner in the center-right of the image.

**Working
Area**



Animat Maxgrip brings the additional traction that is needed around the working area.

By adding the Animat Maxgrip mats to your working area many producers report reduced slipping and less chute side noise which helps to bring calm to your cattle and provide a safer working area. Our interlocking mats lock together tight to provide a solid continuous surface free of gaps.



Brings calm to the herd and provides a safer working area



“We have been pleased with our investment in Maxgrip and Chute Mat. The interlocking Maxgrip mats have good traction and the workers note that the cattle seem to respond better on them. We also like the improved cleanup time compared to previous surfaces.

The Chute Mats have proven to be the best option for traction we have found. Falls and injuries are rare and the crew appreciates the reduced spattering of manure. We placed several of these in the sorting areas in front of the chute.”

Scott Bonifas
Gottsch Cattle Company
Red Cloud Nebraska
62,000 hd feedlot

Testimonial

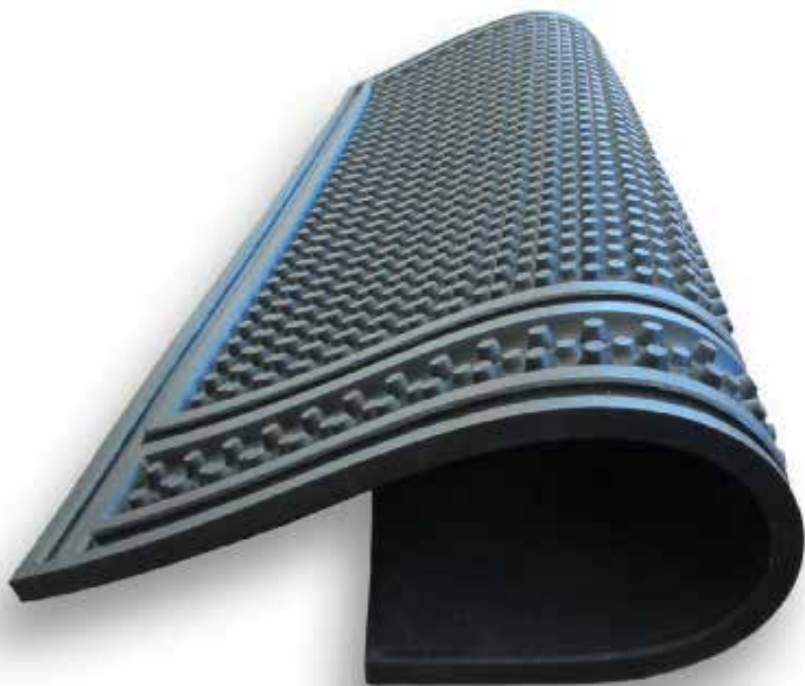


Cattle Chute

Chute Mat

The Animat Chute Mat will help make your cattle handling experience more enjoyable. The Chute Mat provides excellent footing for cattle as they exit the chute area, reducing the possibility of injury due to a slip or fall.

The superior footing helps keep cattle calm, as cattle that slip due to poor footing tend to become agitated and stressed.



The Animat Chute Mats are made of 100% recycled rubber and are designed with different height traction pegs to give cattle the sure footing they need as they exit the processing area. These mats are also used in difficult corners or turns where concrete has become slick from use.

Many producers also enjoy the added comfort these mats provide them chute side as they spend many hours standing and processing cattle.

- Very durable, built for a long life
- Protect your cattle investment
- Helps keep working areas cleaner
- Reduces animal stress
- Chute Mats are 100% rubber



Cattle Trailer

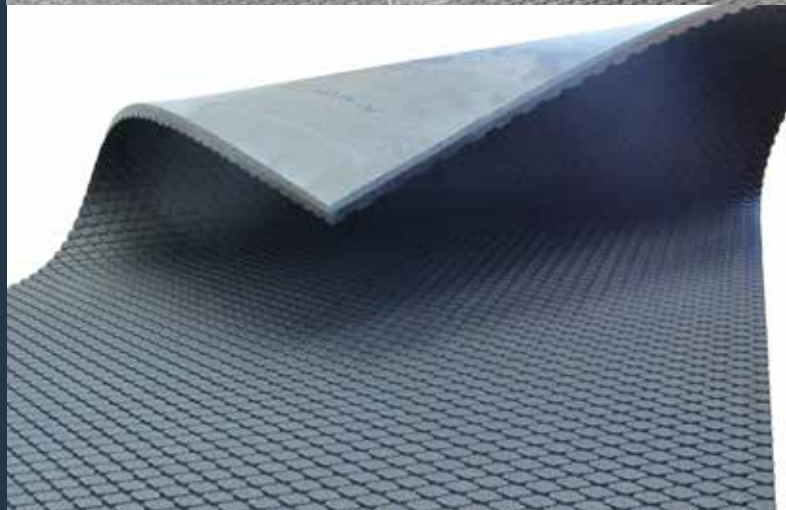


maxgrip

for Trailer

Maxgrip Mats can also provide a cost effective way of reducing stress and injury while transporting cattle in producers trailers. This is done by providing excellent footing and cushion for livestock being transported.

- Improve traction and reduce injuries
- Deaden sound and reduce stress on the cattle
- Reduce bedding expense
- Mats are removable



Reduce the
possibility of falls
while transporting
cattle



About Animat

After more than 36 years of research and development, Animat continues to seek ways to improve comfort and productivity by producing the highest quality rubber flooring that meets the specific requirements of today's livestock producers and all the technological advances in the industry today.

Animat brings a high-quality product to the market. Precision manufacturing techniques that have been refined through years of research and development allow us to offer the perfect solution for your facility. We take great pride in manufacturing rubber mats.

animat.ca