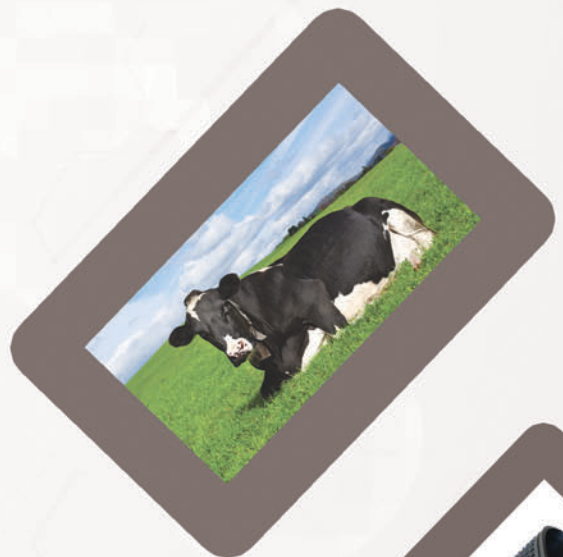


animat.ca

Experience Comfort



Dairy Solution





Introduction



After more than thirty years of research and development, Animat continues to seek ways to improve cow comfort and productivity by producing the highest quality rubber flooring available. Over the years, Animat has invested millions of dollars in developing and manufacturing cow mats that meet the specific requirements of today's dairymen and incorporate the latest technological advances in the industry.

Animat mats for dairy cows provide optimal comfort for your herd. We offer the best quality/price ratio on the market thanks to Animat's unique design, product research, development and manufacturing techniques.

Our cow mats provide unparalleled comfort for your dairy herd and are the only product that comes close to replicating the natural conditions of pastures.



Unlike concrete, Animat mats help cow's hooves and legs absorb shock. Animat's exclusive non-slip surface offers increased traction and superior cow comfort, even when wet, which allows your cows to maintain a natural, sure-footed gait and significantly decreases stress from moving about.

Using the Interlock™ Rubber Flooring System can significantly increase traction for your cows and reduce serious injuries from slips or falls.

Animat cow mats are non-porous and made from 100% recycled rubber, making them very stable as well as easy to clean and disinfect for a healthy environment. Unlike concrete, our mats don't absorb liquid. They adapt well to all existing cleaning methods like flushing, alley scrapers, rubber tire scraping and more.



Accurate heat detection is an important part of dairy herd management and a constant concern for all modern dairymen. Unlike concrete surfaces, Animat rubber flooring reduces slippage, which helps your cows feel secure and allows them to show strong natural heats. This is critical if your heat detection is done by visual observation. Removing any mounting-related stresses can effectively increase your conception ratio since heats appear more strongly and are easier to detect.

For the above reasons and more, Animat cow mats and mattresses can be the most cost-effective investment you can make for your dairy.



animat
Experience Comfort



Animat's Signature Product

The Interlock™ Rubber Flooring System is the final word in floor covering to replace abrasive concrete floors.

By simulating a natural pasture environment that can be adapted to all types of facilities, you can reduce the risk of accidents and injuries in your barns. You will ensure ease of movement for your herd and maintain an easy-to-clean environment.

Interlock™ is the product that most closely replicates natural pasture conditions. It will help your cows regain confidence as they move frequently from place to place and allow them to behave normally.

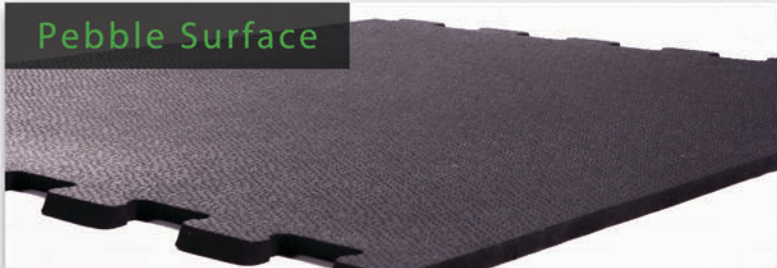
Milking Parlors



Slatted Floor



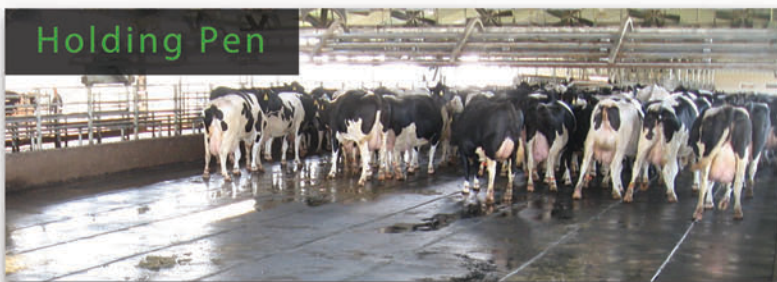
Pebble Surface



Alley



Holding Pen

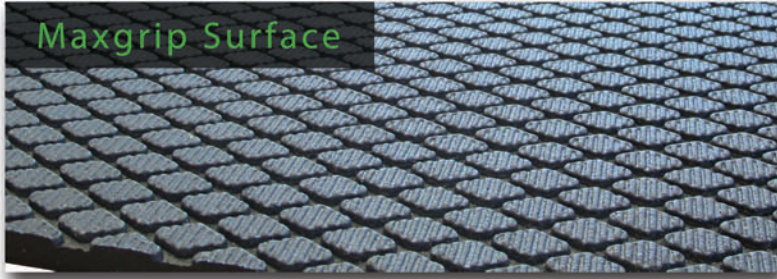


MANY APPLICATIONS

- Skid steer/rubber tire scraping
- Cow alleys and feed alleys
- Tie stall barns
- Conventional parlors
- Robot barns
- Alley scrapers
- Flush systems
- Rotary parlors
- Slatted floors
- Back walks

Interlock™ rubber flooring provides the comfort and security your cows need in order to perform at their genetic potential, which helps significantly improve the productivity of your herd.

Maxgrip Surface



maxgrip

The new Maxgrip Rubber Flooring is a high-quality rubber mat designed specifically to increase traction in difficult farm environments. The diamond-shaped surface has been tested and is sure to improve your cows confidence.

transition

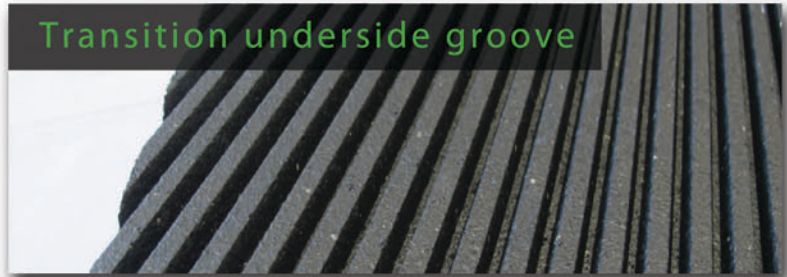
Animat's new product, the Transition Rubber Flooring System, represents the perfect solution for your calves.

The Transition mat provides the comfort and security to allow your calves to grow with strong confidence and to perform up to their genetic potential. Specifically designed for calves under 500 lbs, the grooves under the mat bring maximum comfort.

Transition mat



Transition underside groove



A reduction in lameness has been reported when using rubber mats.



Milk production can be greatly enhanced by decreasing stress in the holding pen.

Interlock 3D



Interlock 3D



InterLock 3D

Patent Pending

Interlock™ 3D is our newest development in rubber flooring. It's built for specific applications requiring extra-strength interlocks. One such example would be sites where a vacuum alley scraper is being used for manure.

The double-bevel angles cut into the interlock tabs provide increased strength vertically and horizontally if the mats are subjected to extra stress.

animatress I

Animatress I™ systems offer a stall bed for most applications in your dairy operation. With superb cow comfort being our ultimate goal, we manufacture this stall bed for cows and heifers.

Animatress I™ is an open cell foam pad with nominal dimensions of 2" x 39" x 69" (5 cm x 99 cm x 175 cm) that is protected by a heavy-duty poly plastic. This pad is then covered with a 1/8" (3 mm) rubber top cover that encases the pad on the exposed sides for the length of the run of the stalls. We recommend this stall bed for most free stall and some tie stall applications. By using our Animatress I™ system, you will provide the maximum cow comfort level needed in today's modern dairy operations.



Providing comfort for more than 30 years



Optimum resting time helps reduce lameness

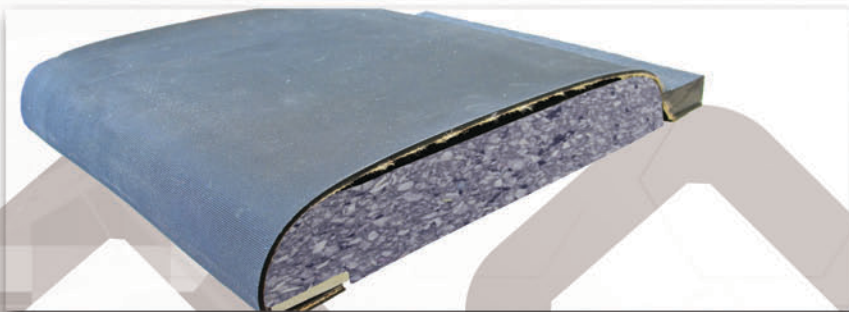


Perfect balance between comfort and support



The key ingredient in a successful mattress system is the compatibility of the foam and the top cover. They must be equally strong in order to complement each other. If one is weaker than the other, the stronger element will fail.

Animat submitted its mattress system to the strict DLG-Fokus testing protocol for acid resistance, durability/elasticity, permanent tread load, abrasion, slip resistance and cleaning distance.



Top Cover

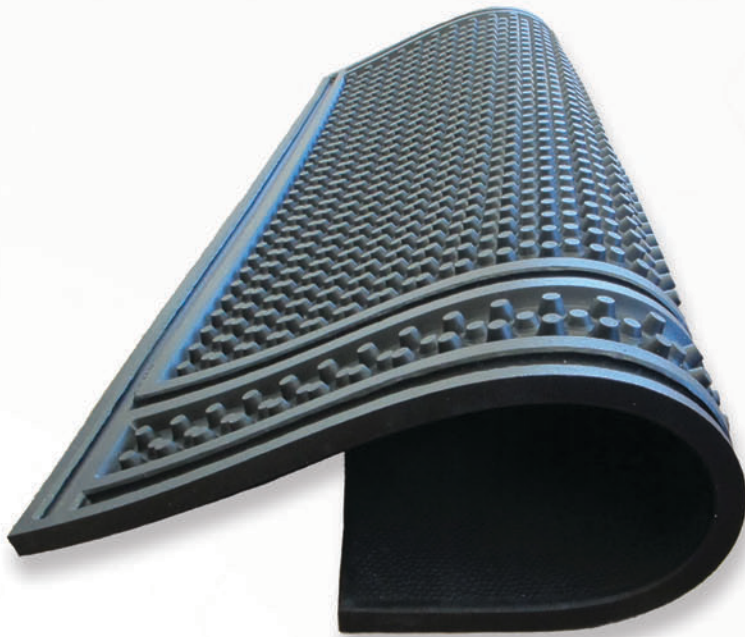
We monitor quality control on our top covers by making them in-house. Our 1/8" (3 mm) top cover is built using a strong, high-strength fabric backing that ensures comfort, strength, elasticity, durability and long life. This fabric is exclusive to Animat.

Foam

We use open cell foam for its superior cushioning properties and long life. It provides a soft but firm cushion that molds to the shape of the cow when she is resting. It then returns to its original shape when she stands up. We use the highest quality foam available for the pads in our mattress systems.



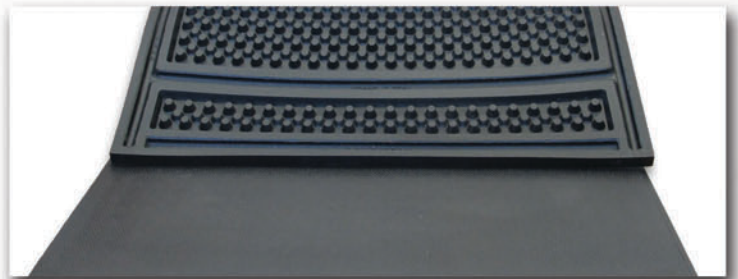
animattress III



The new Animattress III stall bed is a revolutionary mattress for your stalls. It is so easy to install, you can do it yourself!

The familiar pebble-top surface, an Animat trademark, provides superior traction, while the sturdy rim and alternately-sized rubber cones on the underside deliver strength to comfortably support the cow. The Animattress III is durable and remains unaffected by moisture and liquids. All of this comes at a VERY affordable price!

The mattress can be cut to fit the size of most stalls. The Animattress III pad is also available with Interlocks if you require a continuous bed for the cows.



Easy to Install



Affordable

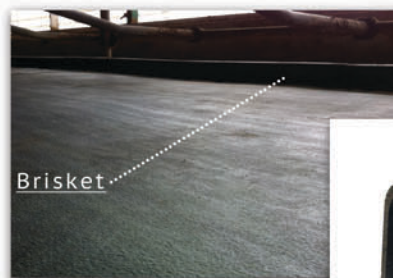


Free & Tie Stall

Brisket

Animat has developed a new extruded poly Brisket. It is built for comfort and superior positioning of the cow in the stall. Brisket installation is quick and simple.

The Brisket can also be installed with most types of mattresses in free stall applications. The Brisket is offered with an end cap to close the open end and a Britstrip to splice the sections together.





animat.ca

395 Rodolphe-Racine
Sherbrooke, Qc, Canada
J1R 0S7

