



Interlock™ 3D is our newest development in rubber flooring. It's built for specific applications requiring extra-strength interlocks. One such example would be sites where a vacuum alley scraper is being used for manure.

The double-bevel angles cut into the interlock tabs provide increased strength vertically and horizontally if the mats are subjected to extra stress.

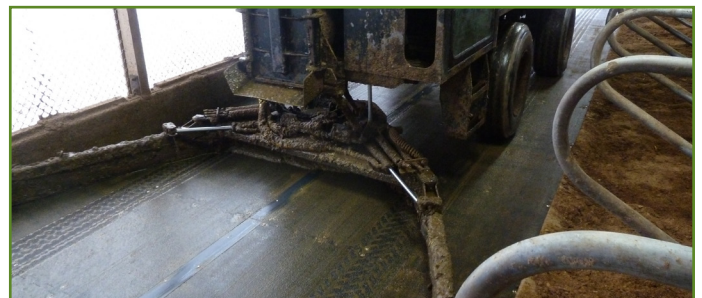
General specifications

- Use:** Alley, walkways, free stalls holding areas, feeding lanes and return lanes.
- Compatibility:** Adapts to all existing cleaning systems, sluicing systems with fixed or moveable scrapers and slatted floors.
- Composition :** 100% recycled rubber, exclusively designed.
- Surface:** Non-slip surface that evacuates water.
- Underside:** Grooved to evacuate liquid.



Size (custom order available)

- Thickness:** 0,740" (+/- 0,030")
19 mm (+/- 0,76 mm)
- Maximum length:** 72" (+/- 0,031")
1828 mm (+/- 0,79 mm)
- Width:** 12" to 48" (+/- 0,031")
304,80 mm to 1220 mm (+/- 0,79 mm)



Other information

- Average weight:** 4,3 lb/ft² (+/- 0,1 lb)
1,95 kg/ft² (+/- 0,045 kg)
- Installation:** Requires less split drive.
- Interlock:** Available on 1, 2, 3 or 4 sides.

animat.ca

Distributed by:

