

DLG Test Report 6355

Animat Inc.

Interlock Flooring System – walking way cover

Deformability/Elasticity, Permanent Tread Load, Abrasion,
Slip resistance, Cleaning distance, Acid resistance



Testzentrum
Technik und Betriebsmittel

www.DLG-Test.de

Overview

DLG-APPROVED Single value-determining criteria

A quality mark “DLG-APPROVED for single value-determining criteria” is awarded to agricultural products which successfully passed a smaller-scope DLG usability test according to independent and recognized evaluation criteria. The test intends to highlight special innovations and key criteria of the test item. The test can focus on criteria from the DLG testing framework for full tests or on other individual features or qualitative criteria. The minimum requirements, the test conditions and procedures as well as the evaluation guidelines of the test results are determined in consultation with a DLG expert

group. They comply with the generally recognized technology rules as well as with scientific and agricultural knowledge and requirements. The successful test concludes with the publishing of a test report and the awarding of a quality mark which is valid for five years following the award date.

The DLG Approved Test “Deformability/Elasticity, Permanent Tread Load, Abrasion, Slip resistance, Acid resistance, Cleaning distance” includes technical measurements on test stands of the DLG Test Center. The deformability and elasticity,



ANIMAT WALKING WAY COVER INTERLOCK

- ✓ Deformability/Elasticity
- ✓ Permanent Tread Load
- ✓ Abrasion
- ✓ Slip resistance
- ✓ Acid resistance
- ✓ Cleaning distance

DLG Test Report 6355

the abrasion resistance, the slip resistance, the acid resistance, the cleaning distance were measured and a permanent tread load was applied. The test was based on the DLG Testing Framework for elastic stable flooring, as at April 2010.

Other criteria were not investigated.

Assessment – Brief Summary

The Animat walking way cover Interlock tested here, an elastic floor for walking ways in cubicle houses, was investigated with regard to durability and comfort properties on test stands in the DLG Approved Test.

The deformability and elasticity, the abrasion resistance, the slip resistance, the cleaning distance, the acid resistance were measured and a permanent tread load was applied. The deformability and elasticity in new condition and following permanent tread load were better than standard.

Table 1:
Overview of results

Test characteristic	Test result	Bewertung*
Deformability and elasticity		
in new condition	1.7 mm, good	+
following endurance test	1.8 mm, good	+
Permanent tread load		
	no lasting deformation	++
	surface no appreciable wear	+
	groves on the bottom little wear	○
Abrasion test		
	good wear resistance	+
Slip resistance**		
	good slip resistance on dry and wet mattress surface	+
Acid resistance***		
Feed acid mixture	resistant	+
Uric acid	resistant	+
Sulfurous acid	resistant	+
Ammonia solution	resistant	+
Disinfection liquid	resistant	+
Cleaning distance		
with flat jet nozzle	5 cm	++
with a coarse dirt remover	50 cm	○

* Evaluation range: ++ / + / ○ / - / -- (○ = standard)

** Evaluation range: + / -

*** Evaluation range: + = resistant / ○ = limited resistant / - = not resistant

The Product

Manufacturer and Applicant

Animat Inc.,
284 Godin Path,
CA J1ROS6 Sherbrooke QC
Kanada

Product:
Walking way cover Interlock

Contact:
Telephone: 0060 819 821 2091 222
Telefax: 0060 819 821 2879
psavary@animat.ca
www.animat.com

Description and Technical Data

The Animat walking way cover Interlock tested here, is an elastic floor for walking ways in cubicle houses.

Black, profiled rubber mat

- ca. 20 mm thick
- surface with a hammer stroke structure
- underside with grooves
 - height ca. 1 mm
 - width ca. 4 mm
- space between the grooves ca. 4 mm
- Shore A hardness: 70
- laid as single mat

The Method

Deformability and elasticity

The deformability is measured in new condition and following permanent tread load with a round steel foot (diameter of 105 mm and therefore a contact area of 75 cm²) and a penetration force of 2,000 N (corresponding to approx. 200 kg).

Permanent tread load

The permanent tread load is measured on a test stand with a round steel foot in the standard test programme with 250,000 alternating loads at 5,000 N (corresponding to approx. 500 kg).

The steel foot is adapted to the natural conditions as an "artificial cow foot". The foot has a diameter of 105 mm and therefore a contact area of 75 cm²; the carrying edge of the hoof is simulated by a 5 mm wide ring on the periphery of the sole that projects 1 mm above the rest of the surface.

Abrasion test

In a standardised abrasion test with 10,000 cycles the top cover was grinded with an emery cloth (gran-

ulation 280) and a grinding pressure of 500 N (= 8.1 N/cm² surface pressure). The friction element was cooled continuously with water to prevent an influence of the generated heat during the abrasion test. The size of the grinded area was 61,5 cm².

Slip resistance

The measurements were carried out with the ComfortControl test rig of the DLG test centre.

A loaded (10 kg) round plastic foot (105 mm diameter, with a contact area of 70 cm², 3 mm wide ring at the periphery of the ground) was pulled with a velocity of 20 mm/s across the mat.

Acid resistance

A permanent dipping test in accordance to DIN EN ISO 175:2000 (performance of synthetic material against liquid chemicals) was carried out. Test samples (size 30 mm x 30 mm) were completely dipped into different test liquids for 24 hours and 28 days (room temperature 20° Celsius).

In the 28 days test the liquids were changed weekly. After the 28 days the samples were washed with distillate water and dried for 24 hours. Before and after the dipping the weight, the dimensions and the shore hardness (shore A) of the test samples were measured.

Additional visual evaluation was done for alterations like colour changing, swelling, destruction or crystallisation. All samples were evaluated in comparison to the standard water.

Cleaning distance

In test stand trials with a high pressure cleaner (approximately 145 bar, exposure period 1 minute with a 25° flat jet nozzle and a coarse dirt remover) the distance was measured where no damage occurs.

The Test Results in Detail

Deformability and elasticity

In the penetration test in new condition with a round steel foot (artificial cow's foot) having a diameter of 105 mm (contact area 75 cm², with a 5 mm wide ring at the periphery of the sole, which projects 1 mm over the rest of the surface (carrying edge of the claw)) and a penetration force of 2.000 N (corresponding to ca. 200 kg), penetration depth was 1.7 mm. This results in a calculated surface pressure of 26.67 N/cm².

Elasticity was measured after the mat had been exposed to a permanent tread load exerted by the steel foot (250.000 alternating loads of 5.000 N). After the endurance test, the penetration depth of the mat increased to 1.8 mm (see Fig. 2).

Evaluation see Table 1.

Permanent tread load

After the mat had been exposed to a permanent tread load exerted with 250.000 alternating loads of 5.000 N (corresponding to ca. 500 kg), the mat showed no appreciable wear on the surface and little wear on the grooves. Lasting deformation could not be observed.

Evaluation see Table 1.

Abrasion test

The abrasion depth after 10,000 cycles amounted to 2.0 mm, this corresponds to approximately 10% of the mat thickness. Of the ground surface 10.4 grams were rubbed off.

Evaluation see Table 1.

Slip resistance

The slide pulling tests showed a good slip resistance on the dry or wet mat surface in new condition. The measured friction coefficients (μ) all surpassed the minimal value of $\mu = 0.45$ which speaks for a good foothold.

Evaluation see Table 1.

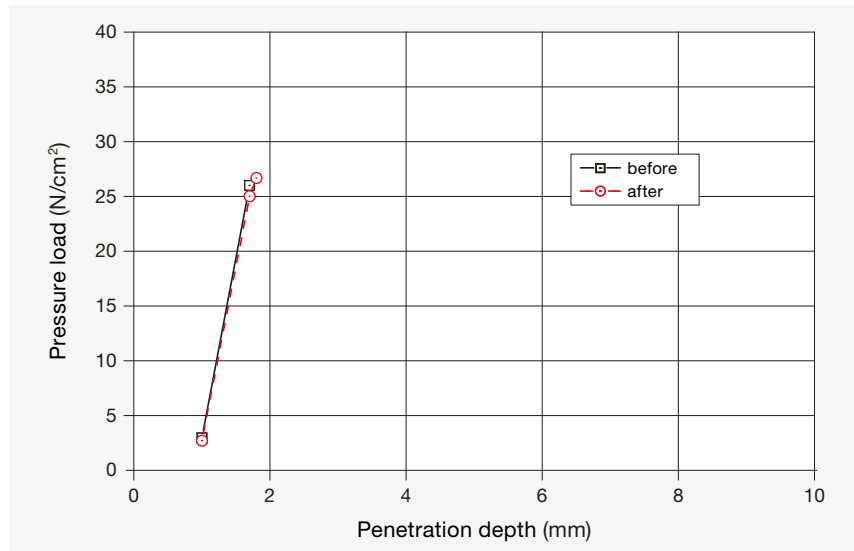


Figure 2:
Deformability as a function of bearing pressure

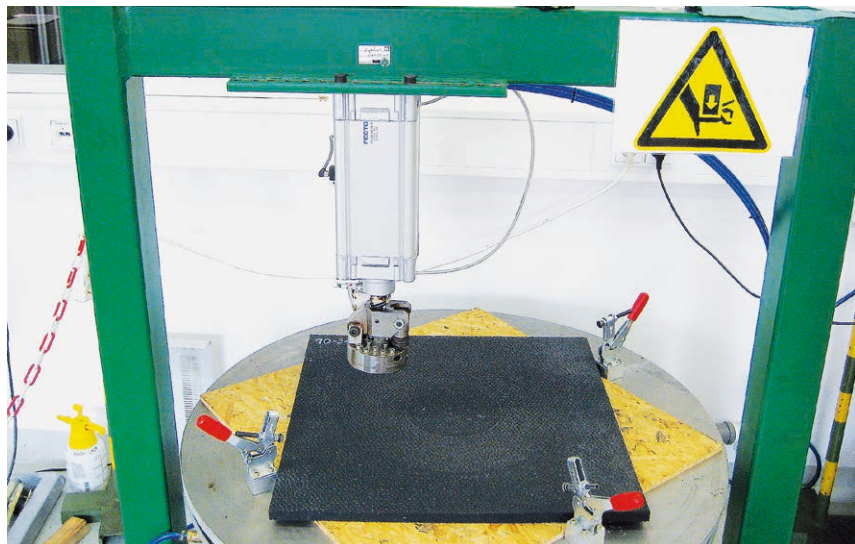


Figure 3:
Permanent tread load

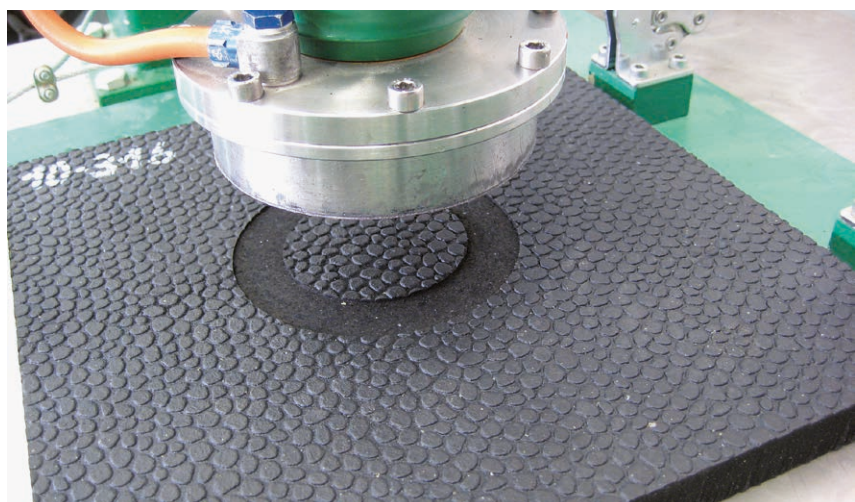


Figure 4:
Test sample after abrasion test

Acid resistance

Because of the resistance against the used feed- and excrement acids and the used disinfection liquid the rubber mat seems to be well suited for the described use. The rubber mat was resistant against the used test liquids. The rubber mat shows no appreciable changing.

Evaluation see Table 1.

Cleaning distance

In test stand trials with a high pressure cleaner damage to the mat only occurred when a minimum distance of 50 cm (with a coarse dirt remover) and 5 cm (with a flat-jet nozzle) was not kept.

For cleaning and disinfection of the floor cover, only the cleaning agents permitted by the manufacturer should be used.

Evaluation see Table 1.

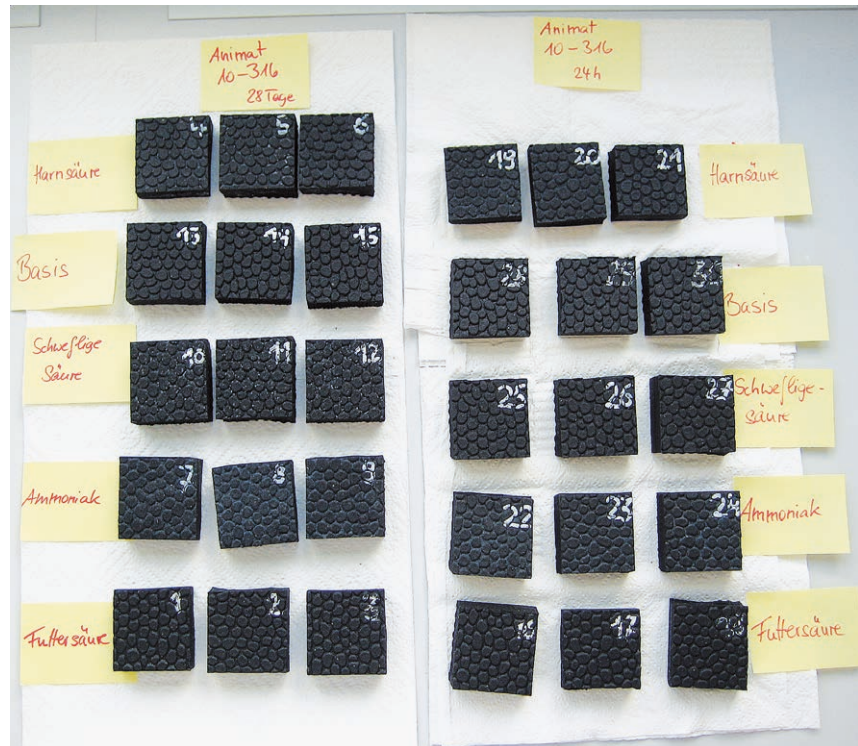


Figure 4:
Samples after acid resistance test

Table 2:

Test liquids and results acid resistance

Test liquid	concentration	result after 24 hours residence time	result after 28 days residence time	Evaluation
Feed acid mixture	concentrate, pH 2	no changing	no changing	resistant
Excrement acids				
Uric acid	saturated urea solution (0,4%)	no changing	no changing	resistant
Sulfurous acid	5-6% SO ₂	no changing	little colour changing (light colored spots on the surface)	resistant
Ammonia solution	32% solution	no changing	no changing	resistant
Disinfection liquid				
Barn Disinfection liquid	2%-solution of a product with formic acid and glyoxyl acid	no changing	no changing	resistant

Summary

Based on test-stand investigations, the criteria tested in this DLG Approved Test evaluate the comfort and durability properties of the Animat walking way cover Interlock for use in the walking ways in cubicle houses.

The tested Animat walking way cover Interlock met the requirements of the Testing Framework with respect to the investigated criteria.

Further Information

Further test results for cubicle floorings are available for download at:

<http://www.dlg.org/stableequipment.html>

The relevant DLG committees have published various instruction leaflets on the topics of animal welfare and cattle farming. These are available free of charge in PDF format at: www.dlg.org/merkmale.html

Test execution

DLG e.V.,
Test Center
Technology and Farm Inputs,
Max-Eyth-Weg 1,
64823 Groß-Umstadt
Germany

DLG Testing Framework

DLG Approved Test
"Elastic Stable Flooring"
(as at 04/2010)

Field

Indoor operations

Project manager

Dipl.-Ing. agr. Susanne Gäckler

Test engineer(s)

Dr Harald Reubold*

* Reporting engineer

The DLG

In addition to conducting its well-known tests of agricultural technology, farm inputs and foodstuffs, the DLG acts as a neutral, open forum for knowledge exchange and opinion-forming in the agricultural and food industry.

Around 180 full-time staff and more than 3,000 expert volunteers develop solutions to current problems. More than 80 committees, working groups and commissions form the basis for expertise and continuity in technical work. Work at the DLG includes the preparation of technical information for the agricultural sector in the form of instruction leaflets and working documents, as well as contributions to specialist magazines and books.

The DLG organises the world's leading trade exhibitions for the agriculture and food industry. In doing so, it helps to discover modern products, processes and services and to make these transparent to the public.

Obtain access to knowledge advancement and other advantages, and collaborate on expert knowledge in the agricultural industry! Please visit http://www.dlg.org/membership_agriculture.html for further information.

The DLG Test Center for Technology and Farm Inputs

The DLG Test Center Technology and Farm Inputs in Groß-Umstadt sets the benchmark for tested

agricultural technology and farm inputs and is the leading provider of testing and certification services for independent technology tests. With the latest measurement technology and practical testing methods, the DLG's test engineers carry out testing of both product developments and innovations.

As an EU-notified test laboratory with multiple accreditations, the DLG Test Center Technology and Farm Inputs provides farmers and practitioners with important information and decision-making aids, in the form of its recognised technology tests and DLG tests, to assist in the planning of investments in agricultural technologies and farm inputs.

16-398
© 2016 DLG



DLG e.V.

Test Center Technology and Farm Inputs

Max-Eyth-Weg 1 · 64823 Groß-Umstadt · Germany
Telephone +49 69 24788-600 · Fax +49 69 24788-690
tech@DLG.org · www.DLG.org

Download all DLG test reports free of charge at: www.dlg-test.de!