

ANIMATRESS I HD



Installation Guide



A NORTH WEST RUBBER COMPANY

Materials Needed

PRODUCT CODE	USAGE
6.0MMTC	1/4" (6 mm) top cover in 82'L (25 m) rolls. Need enough for 8" (20.32 cm) overlap at each end of platform and for any splices.
FOAM 150HD	1.5" x 39" x 69" 250kg (3.81cm x 99 cm x 175 cm 551 lbs) foam pads to cover the platforms.
FILM40X36	Plastic sheeting to cover the platforms and fold back over the foam pads.
BEV212	Plastic strips for "head end" of stall if needed.
SPLIT DRIVE 212	2.5" x 0.25" (6.35 cm x 6.35 mm) mm split drive anchors with 5/16" (7.95 mm) fender washers (Install every 8" (20.32 cm) at the head end if using BEV212 plastic strips).
SPLIT DRIVE 112	1.5" x 0.25" (3.81cm x 6.35 mm) pins (Product Code: SD112) for the remaining perimeter of the platform, including splices. Note: If NOT using BEV212 strips, 1.5" (3.81cm) pins and washers can be used for the entire perimeter of the cover.
WASHER	Ensure that fender washers are used with all pins.

Tools Needed (not supplied)

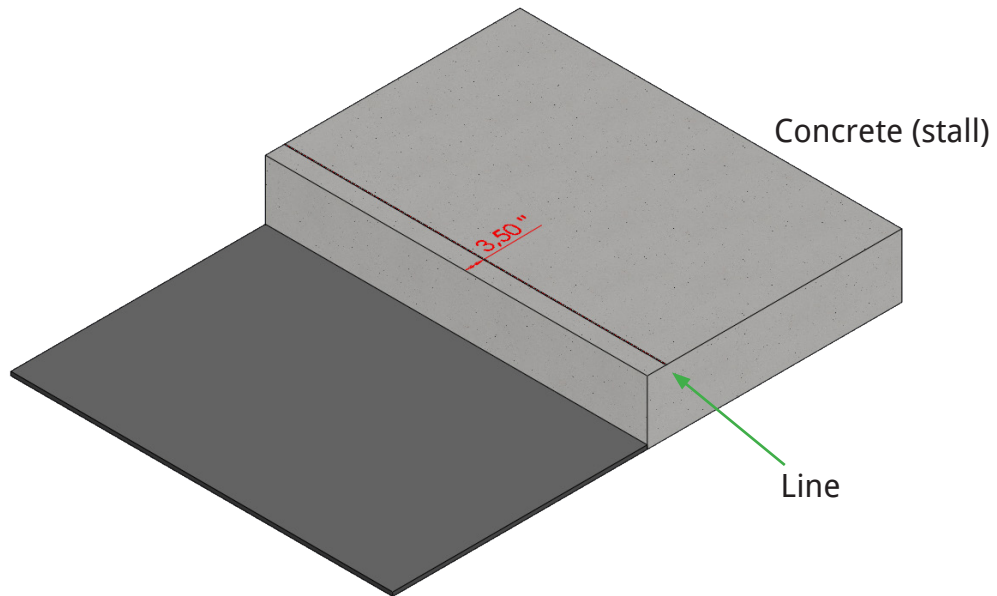
1. Hammer drill(s) with extra 0.25" x 6" (6.35 mm x 15.24 cm) hammer drill bits.
2. Hammers or digging irons for pin installation.
3. 10-12 ratchet straps and vice grips (locking C-clamps).
4. Chalk box for line marking.
5. Snap blade knives for trimming the cover or pads.
6. Extension cords and/or a generator if there is no electricity on-site.

Recommended Crew Size

A team of 3-4 individuals is recommended for the installation.

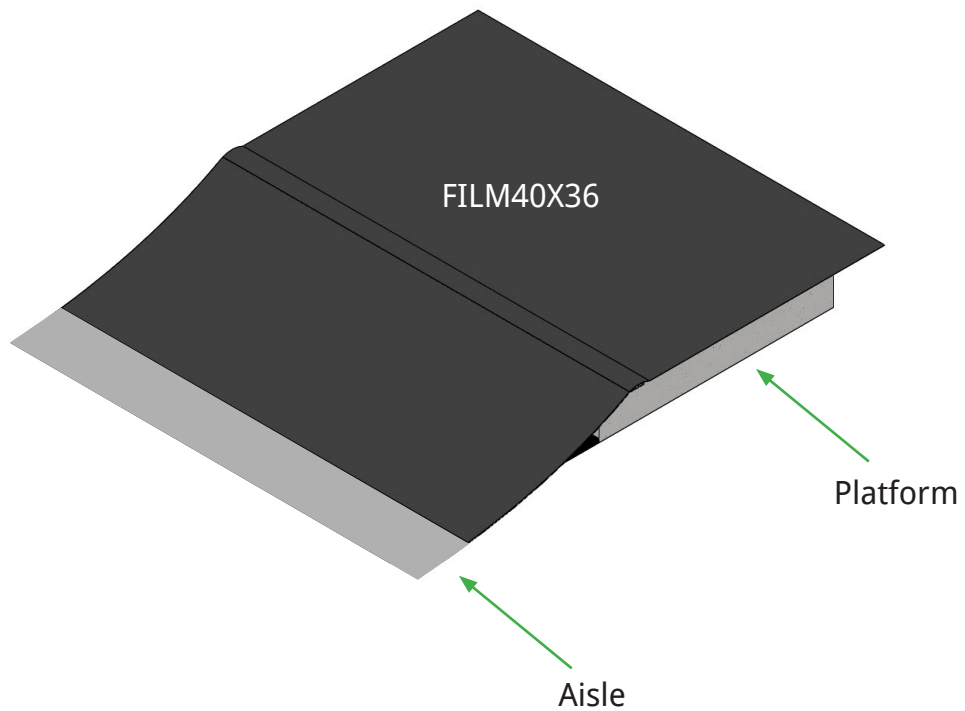
1

Mark a line on top of the curb, about 3-1/2" (8.89 cm) in from the edge.



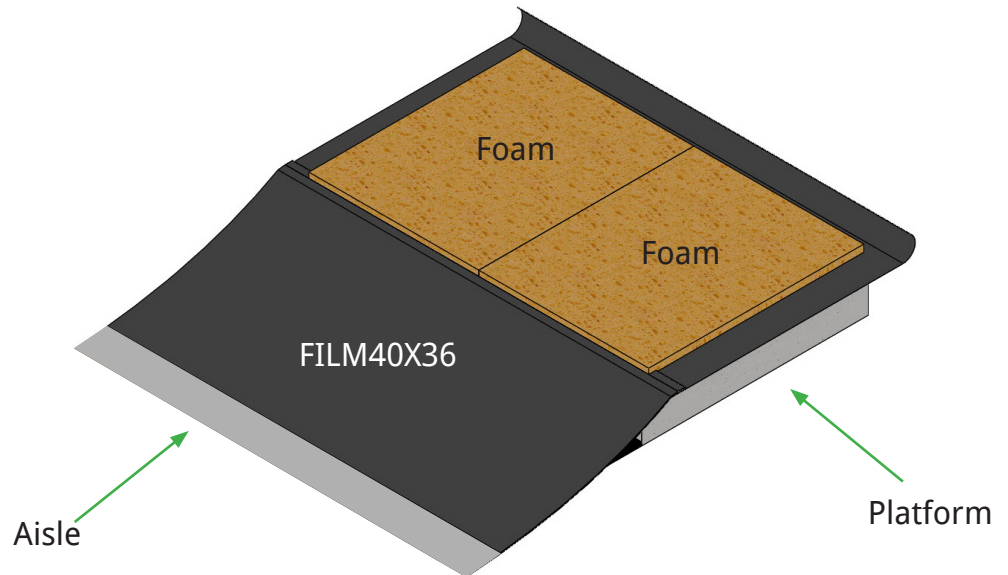
2

Lay the plastic sheeting (FILM40x36) on the clean platform, unfolding it into the center aisle.



3

Place the 1.5" x 250 kg (3.81 cm x 551 lbs) foam pads (FOAM 150HD) on the plastic sheeting, ensuring a tight fit between them. Trim pads on-site to leave a 3.5" (8.89 cm) gap at the curb end and a 3" (7.62 cm) gap at the head end for pinning. Fold the sheeting back over the foam pads, positioning it on the chalk line on top of the curb.

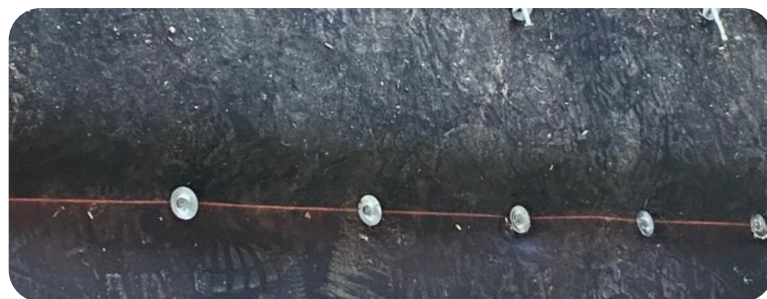


4

Unroll the 1/4" (6 mm) 4-layer top cover (6.0MMTC) in the alley, positioning it on top of the foam/plastic/trim assembly.

5

Begin anchoring the 1/4" (6 mm) cover at one end using 2.5" x 1/4" (6.35 cm x 6.35 mm) SD212 split drives and 5/16" (7.95 mm) washers. Keep the cover straight and square, installing several pins (3) at that end, spaced 8" (20.32 cm) apart. Ensure holes are drilled 3-1/2" - 4" (8.89 cm - 10.16 cm) deep.



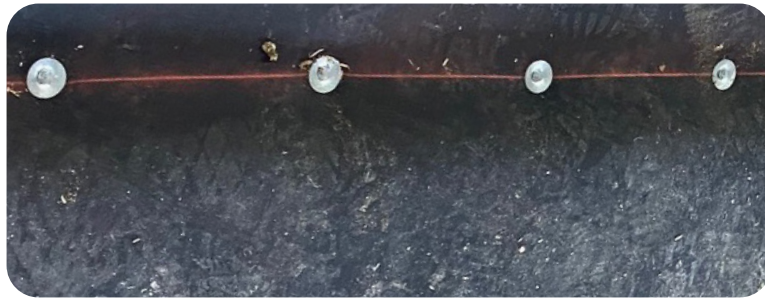
SPLIT DRIVE +
WASHER

ONE END

6

Move to the far end of that cover run, secure it tightly, stretching lengthwise as needed to ensure it lays flat without ripples. Install pins/washers as done at the starting end.

OTHER END



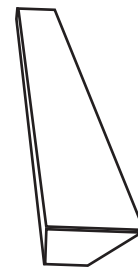
7

Once the cover lies flat and is pinned at both ends in the upper corners, proceed to pin the entire upper edge (head end of the stall) with pins/washers spaced 8" (20.32 cm) apart. For areas with limited clearance, consider using BEV212 strips installed upside down to facilitate pin insertion through the upper edge. Use a guide line on top of the top cover for straight pin alignment when pinning entire lengths.

Head end of the stall

BEV212

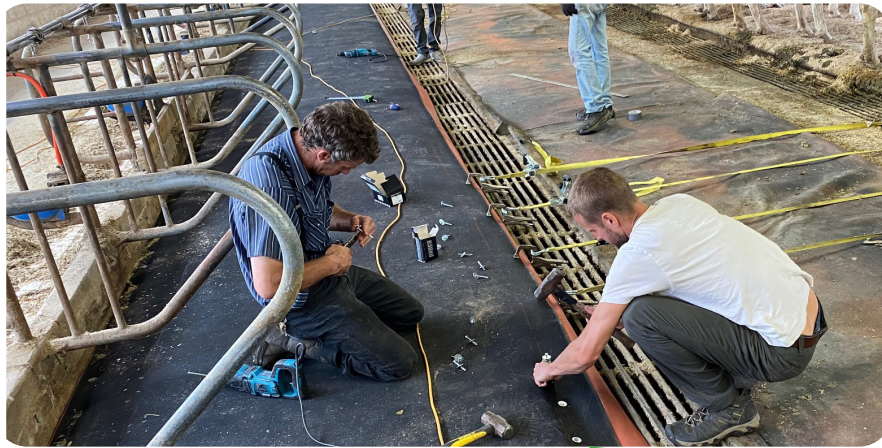
SPLIT DRIVE +
WASHER



BEV212
UPSIDE DOWN

8

Proceed to the lower (gutter) end of the stall, pulling the cover TIGHTLY towards the gutter using ratchet straps, spaced about 12"-24" (30.48 cm - 60.96 cm) apart (more straps are better). Secure the other ends of the ratchet straps to the gutter grate on the opposite side of the center aisle. Install pins/washers along the length of the cover on 8" (20.32 cm) centers, adjusting ratchet straps as needed. Starting in the center and working outward can be helpful.



SPLIT DRIVE +
WASHER

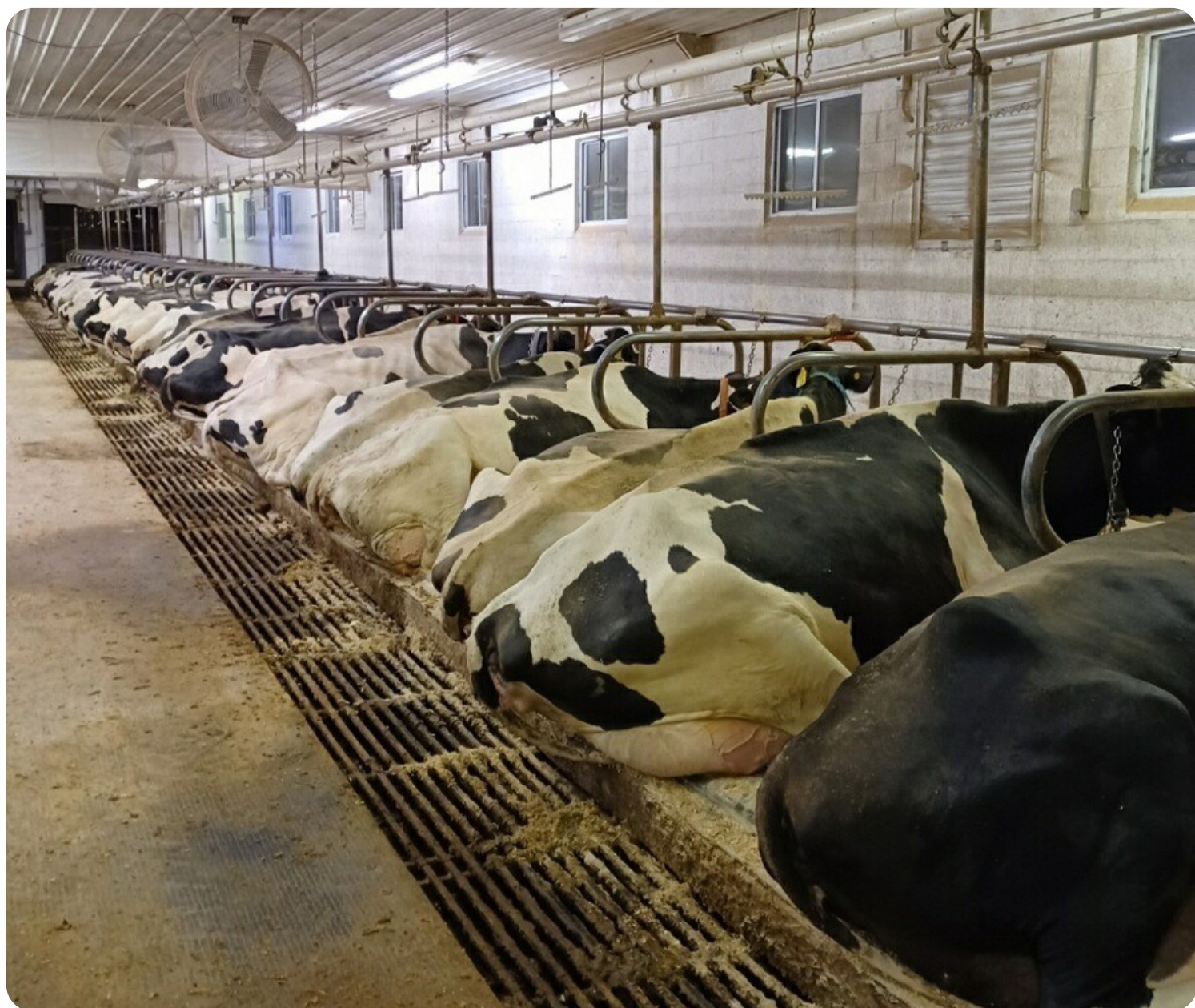
9

When the 82' (25 m) cover rolls run out in the middle of a run, secure that section with a few pins, overlap the spent end with a new roll, place a strip of plastic on top of the cover splice, and start the new run just like the beginning. Pin the plastic seam splice using pins/washers spaced 8" (20.32 cm) on center.

10

After completion, trim off all excess top cover from the gutter end of the stalls, as well as both ends and any splices.

THE INSTALLATION IS COMPLETE





Animat
819-821-2091
395 rodolphe-Racine
Sherbrooke Qc,
Canada